

# cnPilot e430H Indoor

802.11ac Wave 2, Indoor Wall Plate



The Cambium Networks cnPilot™ e430H enterprise class indoor wall plate access point supporting 802.11ac Wave 2 standards based beamforming, is perfect for hotels and resorts, multi-dwelling units (MDUs) or just about any place indoor that needs a wall mounted AP with multiple Gig E ports to drive indoor Wi-Fi and wired port network access managed via portals.

## CONTROLLER MANAGED + AUTONOMOUS

Managed by Cambium Networks' cnMaestro™ cloud controller or On-premises controller, the cnPilot e430H management includes:

- Zero touch onboarding • Inventory tracking
- Monitoring • Configuration • Dashboard views with alarms
- Mass upgrade • Troubleshooting
- Wireless and Wired port splash page guest portal

## CONTROLLER-LESS ROAMING. POWERFUL SIMPLICITY

The e430H supports network wide seamless roaming for up to 2,048 clients. Host the hotspot portal on the AP for controller-less simplicity, or on cnMaestro for a powerful network wide portal.

## MONETIZE: VOUCHERS. SOCIAL LOGIN



Monetize your Wi-Fi service: cnMaestro's guest access feature supports splash page hosting, social login and payment gateway for wired and wireless clients. Built-in power packed features available right on the controller. These features along with the ability to create time, rate and volume limited traffic profiles along with vouchers for temporary guest access makes the e430H ideal for hotels, coffee shops, campgrounds, and office guest Wi-Fi.

## SERVICE AWARE WLANS. BETTER USER EXPERIENCE

Nothing is more frustrating than connecting to an AP, but not getting to the internet because the WAN link is down. When connection to a critical resource such as an external Gateway or AAA is down, the e430H monitors the uplink Gigabit interface for network outage. If an outage is detected, the impacted WLANS are disabled enabling client devices to select a neighboring AP.

## Wi-Fi MESH. FLEXIBILITY

Meshing is supported across e430Hs as well as with any other indoor or outdoor Cambium Networks AP Enterprise AP, for a convenient way to expand Wi-Fi coverage without laying out cabling.

## COVERAGE, CAPACITY. SPEED

The e430H packs strong transmit power and the flexible controls needed to control transmit power for high density deployments. Throughput management via airtime fairness, increased performance from autoRF, and higher client device speeds from band steering ensure your e430H network can adapt to the dynamics of ever changing client profiles.

## HIGH DENSITY, HIGHLY AVAILABLE

A capacity of 256 max concurrent client associations, and 16 SSIDs, along with dual on-board Active/Standby memory banks ensure the e430H combines high density with high availability.

## LOW TOTAL COST OF OPERATIONS (TCO) LICENSE FREE OPTION

All cnPilot access points offer total management flexibility. The e430H can be managed as a standalone access point, from an on-premises cnMaestro controller, or a cloud accessed cnMaestro account. cnPilot access points also support AutoPilot, allowing one AP to be a controller for a small network.

**ACCESSORIZE** The e430H package comes with a single-gang wall mount bracket. Optional accessories also include dual gang wall bracket or a desktop stand for small room table top retail outlets or dorm rooms installs.

**WARRANTY** Limited Lifetime Warranty (5 years)

## SPECIFICATIONS

## Access Point Specifications

<b>Standards</b>	IEEE 802.11a/b/g/n/ac Wave2 IEEE 802.11d/e/h/i/k/r/u/v/w Modulation: BPSK, QPSK, CCK, 16/64/256-QAM Radio modes : DSSS, OFDM	<b>Frequency Bands</b>	2.400 to 2.2484 GHz <i>(Country-specific limits apply, some bands require DFS)</i> 5.150 to 5.250 GHz 5.250 to 5.350 GHz 5.470 to 5.725 GHz 5.725 to 5.850 GHz
<b>MIMO, Streams</b>	2x2:2 MU-MIMO	<b>Power Supply</b>	802.3af PoE Injector, or PoE switch. 48V DC. 802.3at or PoE+ if using PoE-Out
<b>Beamforming</b>	Supported	<b>Dimensions</b>	14.7 x 9.4 x 3.4 cm (5.7 x 3.7 x 1.3 Inch)
<b>Channel Width</b>	20MHz, 40MHz, 80MHz	<b>Weight</b>	390 g (0.86 lb)
<b>Concurrent Clients</b>	256	<b>Operating Temperature</b>	0°C to +45°C (+32°F to +113°F)
<b>SSIDs</b>	16	<b>Operating Humidity</b>	5% to 95% non-condensing
<b>Transmit Power</b> <i>(conducted total)</i>	2.4GHz : 23dBm    5GHz : 21dBm	<b>Power Consumed</b>	9W (typical) 25W (max, with PoE-out)
<b>Antenna Gain</b>	2.4GHz : 3.5dBi    5GHz : 4.9dBi	<b>LED</b>	Tri-color software controlled LED
<b>Max Data Rate</b>	2.4GHz : 400Mbps    5GHz : 867Mbps	<b>Secure Mounting</b>	Kensington Key Slot
<b>Antenna</b>	Omnidirectional, integrated	<b>MTBF</b>	1,025,801 hrs at 50C, 2,828,686 hrs at 25C
<b>Bluetooth</b>	Bluetooth 4 BLE Radio, 3.3dBi antenna	<b>Reset Button</b>	Supported
<b>Ethernet Ports</b>	Four auto-sensing MDIX Gigabit Ethernet (10/100/1000 Mbps). One pass-through Port.	<b>Certifications</b>	FCC, CE, IC, UL, WEEE/RoHS compliance
<b>Radio Features</b>	Maximum ratio combining (MRC) Cyclic delay/shift diversity (CDD/CSD) Space-time blocking coding (STBC) Low-density parity check (LDPC) Packet Aggregation: A-MPDU, A-MSDU	<b>Mounting Options</b>	In wall single-gang bracket included. Accessories available: dual gang bracket, on-wall bracket, desktop stand.
<b>Wi-Fi Alliance</b>	Wi-Fi certified a,b,g,n, ac WPA2 – Enterprise, Personal WMM		

## Wi-Fi Features

<b>Management Modes</b>	cnMaestro cloud managed cnMaestro on-premises VM controller managed Autopilot (AP as controller) Standalone with AP GUI (http/https), CLI (telnet/ssh)	<b>Wireless Security</b>	WPA-TKIP, WPA2-AES, 802.11i WPA-PSK, WPA2-PSK, WPA2-Enterprise 802.1x Authentication with various EAP types (EAP-TLS, EAP-TTLS/MSCHAPv2, PEAPv0/EAP-MSCHAPv2, PEAPv1/EAP-GTC, EAP-SIM, EAP-AKA, EAP-AKA', EAP-FAST Protected Management Frames (802.11w)
<b>RF Management</b>	AutoRF automatically manages channel and power	<b>Dynamic SSID Service</b>	By time/date, by monitored host.
<b>Guest Access Captive Portal</b>	cnMaestro Controller Portal. Integrates with 3 <sup>rd</sup> party Guest Access Portals. Built-in Portal on AP. LDAP & RADIUS authentication. Walled Garden with DNS whitelist. Wireless and Wired Clients supported.	<b>MAC Authentication</b>	On-AP MAC filtering list. On-Controller MAC filtering list. RADIUS MAC Authentication. MAC Authentication fallback to Captive Portal
<b>Rate Limiting</b>	Per-client, Per-WLAN static and dynamic rate limiting	<b>Access Control Lists</b>	Layer-2, Layer-3, DNS
<b>Client Isolation</b>	On AP, Network-wide.	<b>3G/4G/LTE Offload</b>	Passpoint (Hotspot 2.0)
<b>Fast Roaming</b>	802.11r, Opportunistic Key Caching, Enhanced Roaming	<b>DHCP Relay</b>	Supported, with Option-82 customization
<b>Airtime</b>	Airtime Fairness, Band Steering, Band Balancing	<b>NMS Monitoring</b>	SNMP v1, v2c, v3
<b>AAA Support</b>	RADIUS Authentication, Accounting, Dynamic Authorization (CoA, DM). Server failover, load-balancing	<b>Client APIs</b>	Client Presence/Location API DNS, NAT and TCP Connecting Logging
<b>QoS</b>	802.11e/WMM QoS. DSCP/ToS mapping.	<b>Time Synchronization</b>	Auto (from controller), NTP
<b>Ethernet (L2) Services</b>	802.1p/802.q, RADIUS assigned VLAN, VLAN per SSID, VLAN pooling. LLDP. IGMP Snooping (V1/V2/V3).	<b>Troubleshooting Tools</b>	Packet Capture, Spectrum Analyzer, Ping, Traceroute, Syslogs
<b>Mesh</b>	WDS Mesh with Single and Multiple radio hops.	<b>Traffic Tunnels</b>	L2TP, L2oGRE, PPPoE
<b>Network Services</b>	NAT, DHCP Server		

THE e430H SOLUTION ARCHITECTURE VIEW



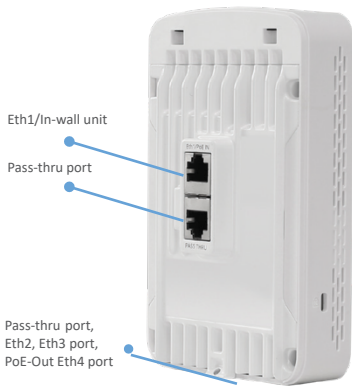
e430H – Radio unit and Accessories (optional)

e430H radio front facing



Aesthetically pleasing design with a low profile to seamlessly integrate in a hospitality or MDU.

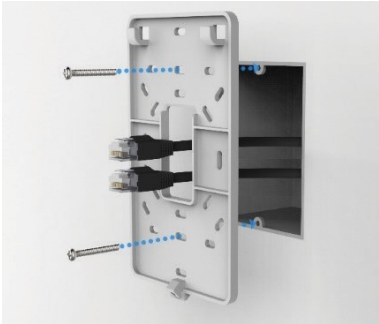
e430H radio rear facing



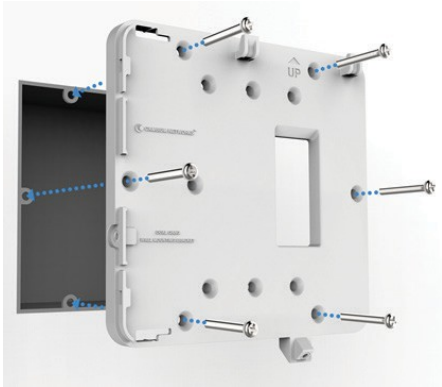
Optional Accessory: Desktop stand



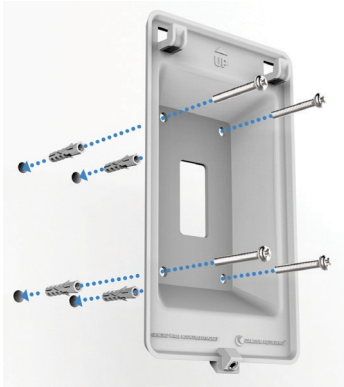
Included: Single gang bracket



Optional Accessory: Dual gang bracket



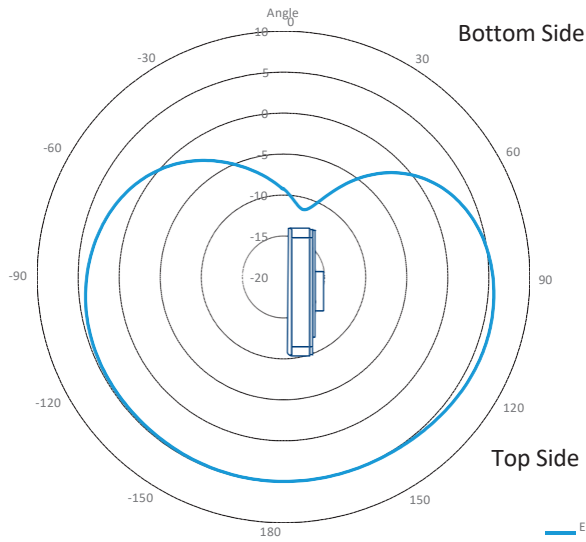
Optional Accessory: Generic wall bracket



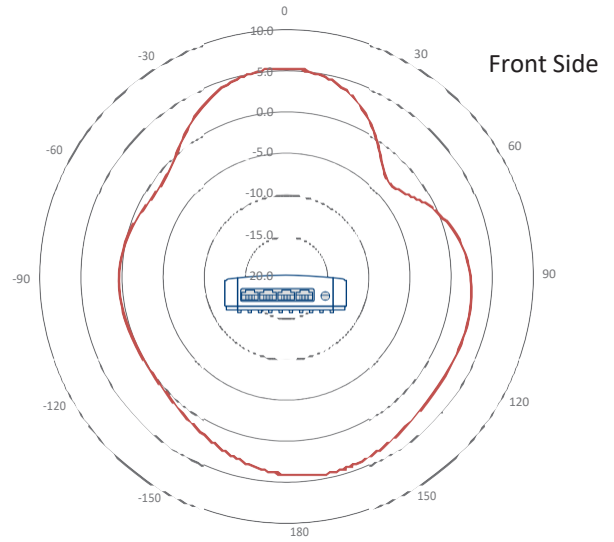
The e430H is designed to be powered by an external PoE Switch or PoE Injector. Alternatively, it may be powered by a 48V/1A DC adaptor (sold separately). Other optional mounting accessories are available for separate purchase

e430H Antenna Patterns

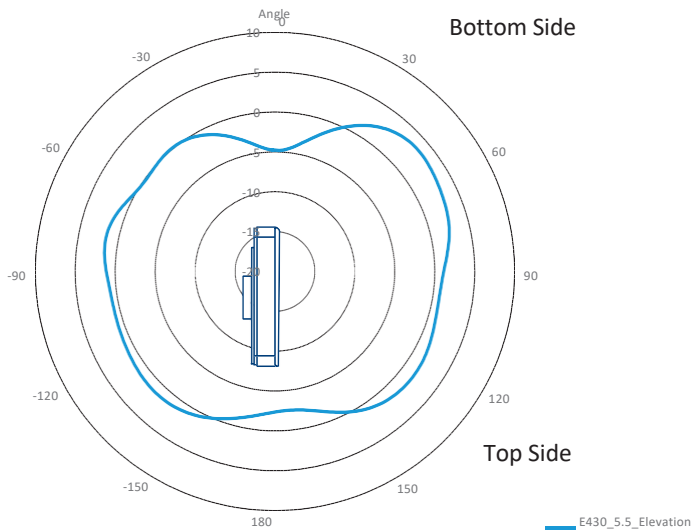
2.4 GHz Elevation



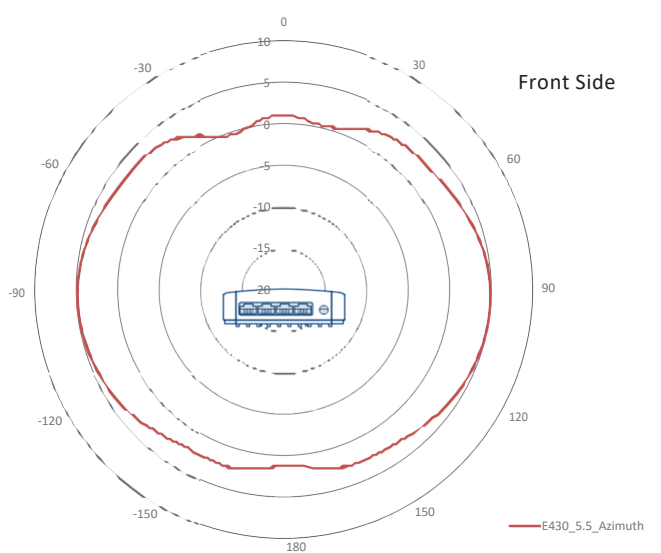
2.4 GHz Azimuth



5 GHz Elevation



5 GHz Azimuth



Regulatory Model Number (common to all sales part #s): REG-

PL-E430H Sales part #	Description
PL-E430H00A-US	cnPilot e430H Indoor (FCC) 802.11ac wave 2, Wall plate WLAN AP w/ single-gang wall bracket
PL-E430H00A-CA	cnPilot e430H Indoor (CA) 802.11ac wave 2, Wall Plate, WLAN AP w/single-gang wall bracket. Canada
PL-E430H00A-EU	cnPilot e430H Indoor (EU) 802.11ac wave 2, Wall plate WLAN AP w/ single-gang wall bracket
PL-E430H00A-RW	cnPilot e430H Indoor (ROW) 802.11ac wave 2, Wall plate WLAN AP w/ single-gang wall bracket
PL-E430H00A-IL	cnPilot e430H Indoor (Israel) 802.11ac wave 2, Wall plate WLAN AP w/ single-gang wall bracket

Discover more information on cnPilot WLAN solutions at: <http://community.cambiumnetworks.com/>