

# RB924i-2nD-BT5&BG77



## KNOT RB924i-2nD-BT5&BG77

### Connecting

- Make sure your Internet service provider is allowing hardware change and will issue an automatic IP address;
- Connect your ISP cable to the first Ethernet port;
- Connect the device to the power source;
- Open network connections on your computer and search for MikroTik wireless network - connect to it;
- The configuration has to be done through the wireless network using a web browser or mobile app. Alternatively, you can use a WinBox configuration tool <https://mt.lv/winbox>;
- Open <https://192.168.88.1> in your web browser to start configuration, user name: admin and there is no password by default;
- Click the Check for updates button and update your RouterOS software to the latest version, must have an active Internet connection;
- In the Quick Set, WISP AP menu choose your country and apply country regulation settings;
- Set the antenna gain, depending on the antenna used;
- Set up your wireless network password;
- Set up your router password.

### Mounting



1. The device can be mounted using provided DIN rail mount set. Designed to fit standard 35 mm x 7.5 mm DIN rails. Attach it with two provided screws to the device and attach the device to the DIN rail. The DIN rail is not provided in the package.
2. Alternatively, it is possible to attach the device to a wall, using the provided screw holes on the back of the unit. The device should be mounted in a way that the cable openings are pointing downward as shown in the picture.



*Warning! This equipment should be installed and operated with a minimum distance of 20 cm between the device and your body. The operation of this equipment in the residential environment could cause radio interference. Mounting and configuration of this device should be done by a qualified person.*

### Powering

- Direct-input power jack (5.5 mm outside and 2 mm inside, female, pin positive plug) accepts 12-57 V DC.
- microUSB port accepts 5 V powering.

- Ethernet port accepts 802.3af/at Power over Ethernet 12-57 V DC.

The power consumption under maximum load with attachments can reach 18 W.  
Connecting to a PoE Adapter:

1. Connect the Ethernet cable from the device to the PoE+DATA port of the PoE adapter.
2. Connect an Ethernet cable from your local network (LAN) to the PoE adapter.
3. Connect the power cord to the adapter, and then plug the power cord into a power outlet.

## Extension slots and ports

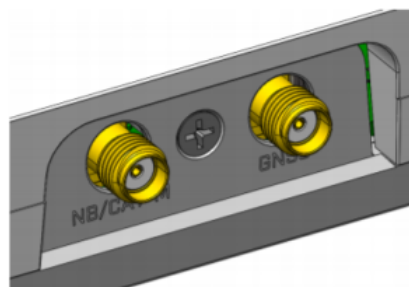


- 2.4 GHz, 802.11b/g/n, antenna gain 1.5 dBi.
- Built-in GPS module (GPS, GLONASS, BeiDou, Galileo).
- Two 10/100 Ethernet ports, supporting automatic cross/straight cable correction (Auto MDI/X). Either straight or crossover cable can be used for connecting to other network devices. The Ethernet port accepts 12-57 V DC power from an 802.3af/at PoE injector.
- One microUSB 2.0 port for powering only.
- One nano SIM slot.
- Bluetooth version 5.2, antenna gain 2 dBi.

## GPS

NB/CAT-M

Attach your antennas to the SMA connectors:



**i** BG77 supports NB and GNSS, cannot be used together. <https://help.mikrotik.com/docs/display/ROS/IoT>

**i** External antennas must be connected to use the Narrow Band modem and GPS. Not provided with the package.

## Buttons and jumpers

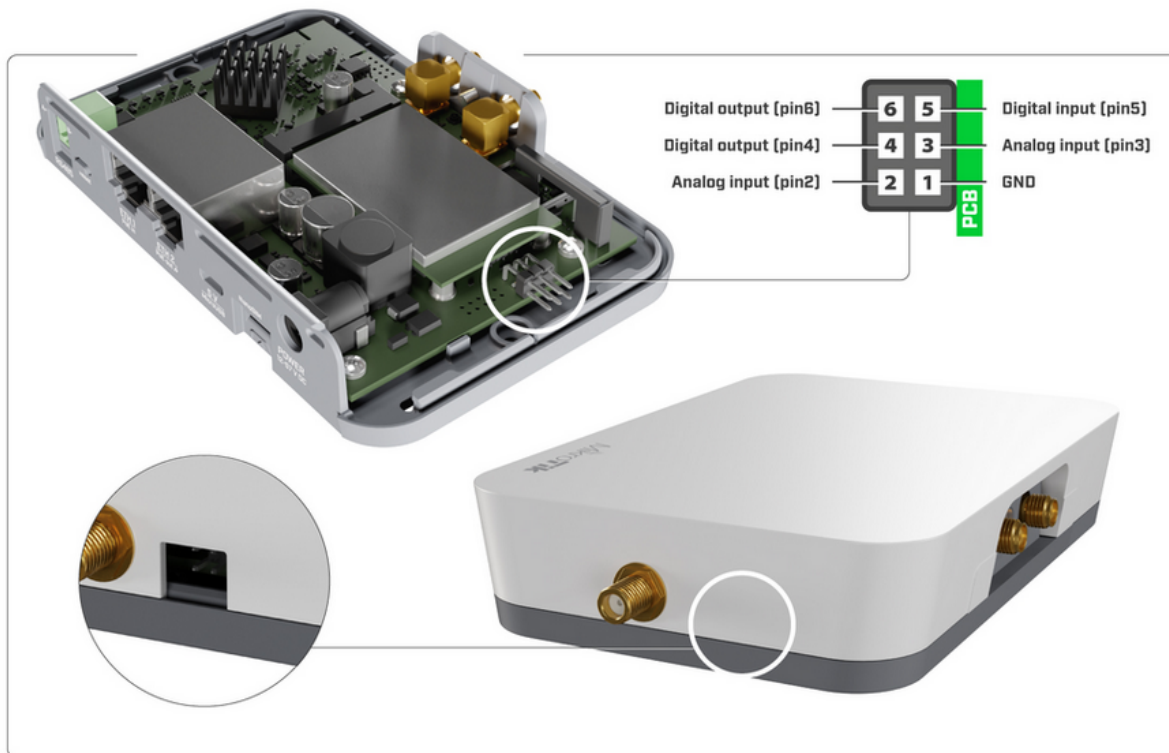
### Reset button

- Hold this button during boot time until the LED light starts flashing, release the button to reset RouterOS configuration (total 5 seconds).
- Keep holding for 5 more seconds, LED turns solid, release now to turn on CAP mode. The device will now look for a CAPsMAN server (total 10 seconds).
- Or keep holding the button for 5 more seconds until LED turns off, then release it to make the RouterBOARD look for Netinstall servers (total 15 seconds).

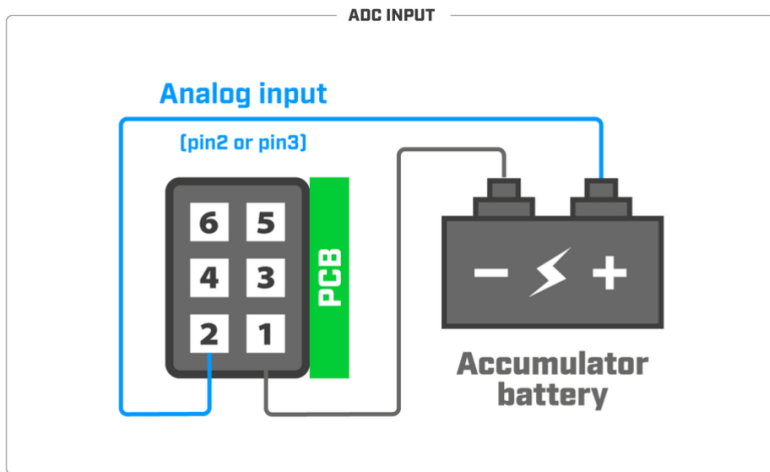
Regardless of the above option used, the system will load the backup RouterBOOT loader if the button is pressed before power is applied to the device. Useful for RouterBOOT debugging and recovery.

## GPIO pinout

GPIO pins are located on the board under the case as shown in the picture:

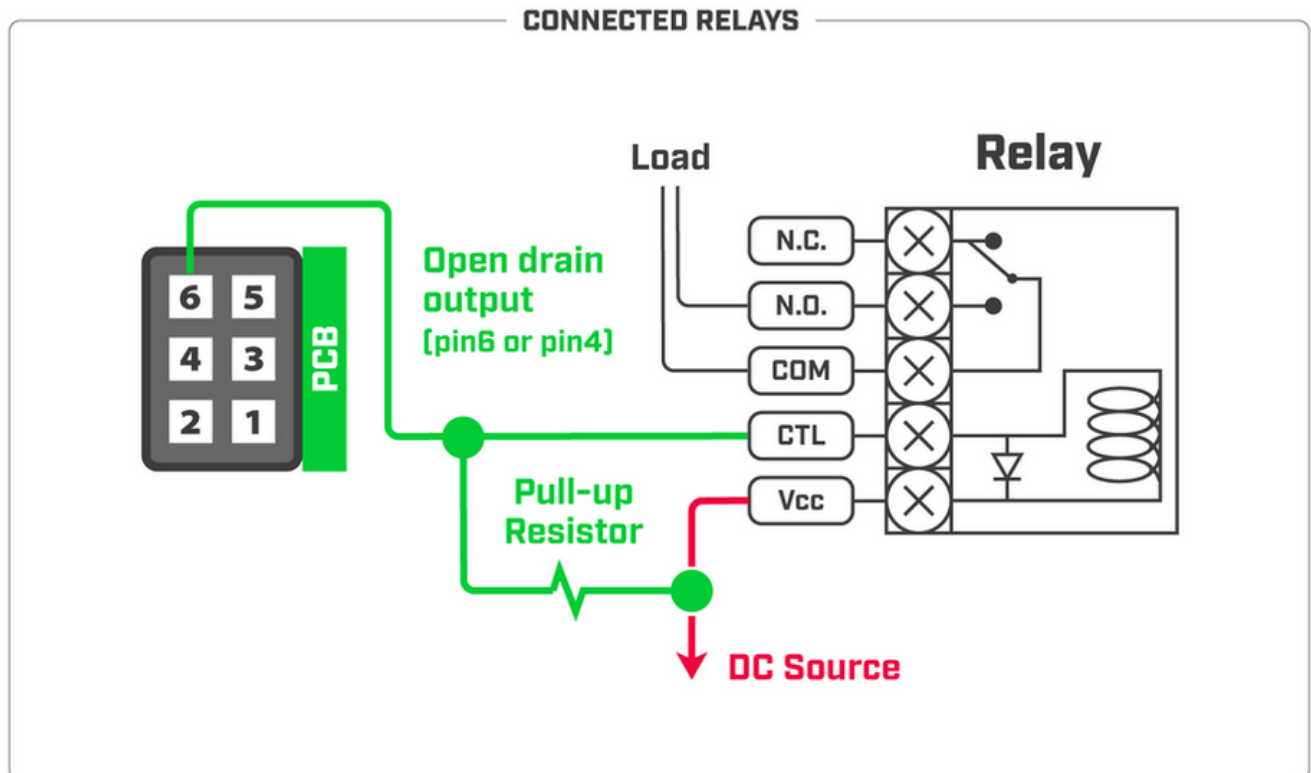


ADC input/analog input (pin2 or pin3):

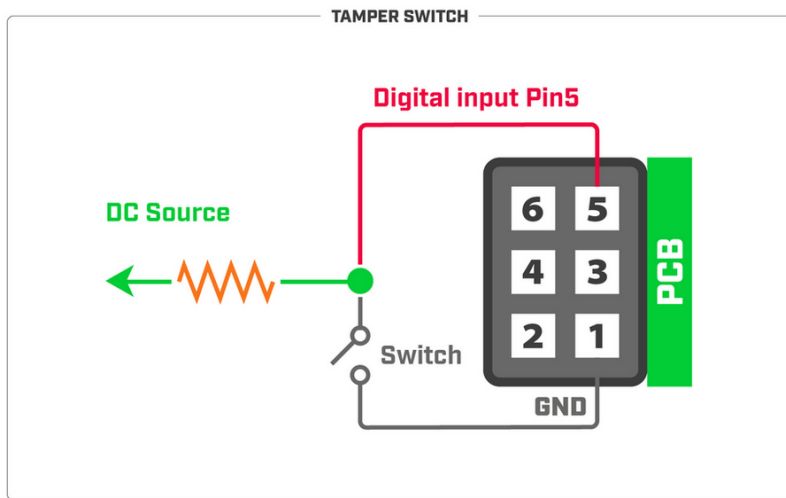


**note:** Analog input voltage is 0-60 V. Theoretical resolution is 4 mV (14bit ADC). Analog input impedance is approximately 72K Ohm.

Connected relays (pin4 or pin6):



Tamper switch (pin5):



**note:** Digital input voltage is 0-2.5 V max. To receive a logical "0" on the pin, the voltage should be between 0-0.3 V. To receive a logical "1" on the pin, the voltage should be between 0.7-2.5 V.

## Accessories

The package includes the following accessories that come with the device:

- ADAPT1\_ EU/US Switching Power Supply 24V, 1.2A, 28.8W, 86.8%, VI.
- CAB1\_ USB A Female to Micro B cable.
- SET1\_ K-47 wall mount set, two screws, and dowels.
- SET2\_ K-74 Din rail mount set.
- Modbus connector, A+, B-.

## Operating system support

The device supports RouterOS software version 6.48.1. The specific factory-installed version number is indicated in the RouterOS menu /system resource. Other operating systems have not been tested.

## Configuration

RouterOS includes many configuration options in addition to what is described in this document. We suggest starting here to get yourself accustomed to the possibilities: <https://mt.lv/help>. In case an IP connection is not available, the Winbox tool (<https://mt.lv/winbox>) can be used to connect to the MAC address of the device from the LAN side (all access is blocked from the internet port by default).

For recovery purposes, it is possible to boot the device from the network, see section [Buttons and jumpers](#).

**note:** make sure that **iot** package is installed beforehand.

## Overview

Protocols such as MQTT and HTTP are widely used to push data within [M2M](#) networks. M2M topologies can use different technologies, such as Wi-Fi or Bluetooth to send data within networks.

KNOT is a new addition to one of our IoT solutions. KNOT acts as an IoT gateway (that uses Narrow Band and CAT-M technology) and uses Bluetooth to scan broadcasted information. With the Bluetooth interface, you can use the KNOT for asset tracking and telemetry based on Bluetooth advertisement packets. KNOT supports any BLE tag that sends advertisement data. iBeacon, Eddystone, or any other format. It has powerful filters for forwarding only relevant packets and ignoring others. After the gateway processes the data that it receives, it can use an ISP connection to publish the data further to any subscriber or server that is configured accordingly.

All you need to do is to configure a script. The script can filter broadcasted information and push it to the internet.

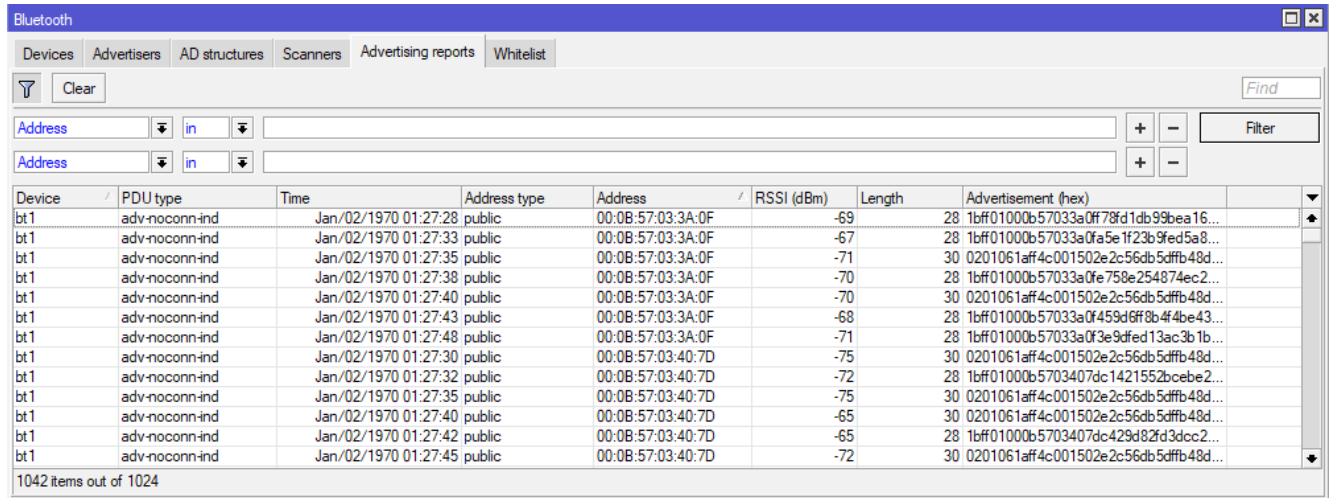
This article explains how to configure KNOT to publish data using MQTT or http protocols.

 External antennas must be connected to use the Narrow Band modem and GPS. Not provided with the package.

## Reports

Navigate to IoT>Bluetooth.

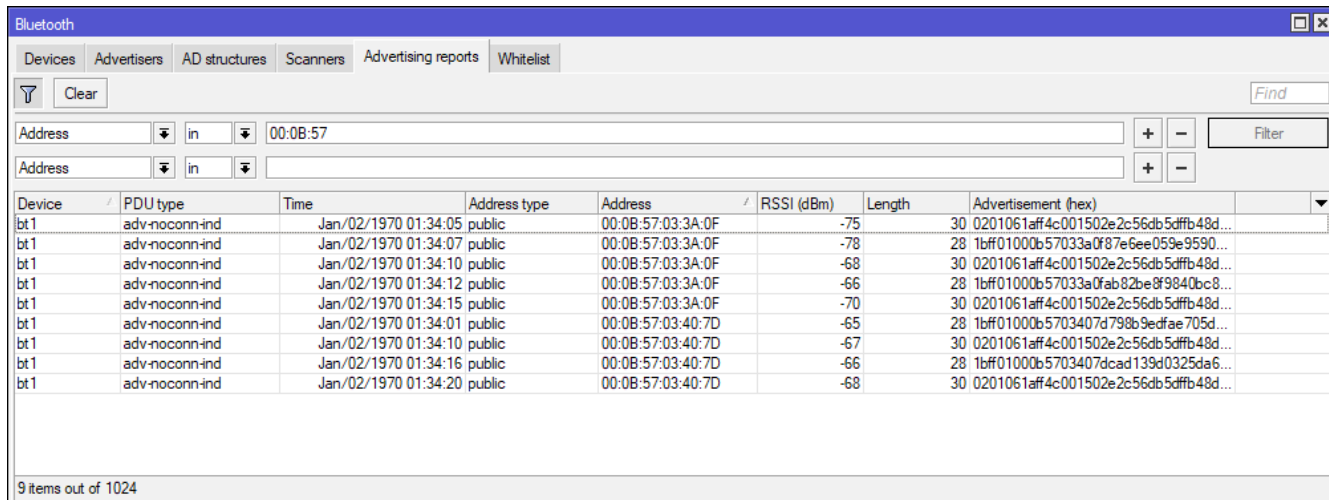
You can find all broadcasting devices in the “Advertising reports” tab.



The screenshot shows the Bluetooth Advertising reports interface. The top navigation bar includes tabs for Devices, Advertisers, AD structures, Scanners, Advertising reports (selected), and Whitelist. Below the navigation bar, there is a search area with a 'Clear' button and a 'Find' input field. Two filter rows are visible, each with a dropdown menu for 'Address' and a 'Filter' button. The main table displays the following columns: Device, PDU type, Time, Address type, Address, RSSI (dBm), Length, and Advertisement (hex). The table contains 14 rows of data, all for device 'bt1' with PDU type 'adv-noconn-ind'. The time range is from 01:27:28 to 01:27:45. The address type is 'public' and the address is '00:0B:57:03:3A:0F'. The RSSI values range from -65 to -75 dBm, and the advertisement length is 28 or 30 bytes. The advertisement hex data is truncated. At the bottom, it indicates '1042 items out of 1024'.

Device	PDU type	Time	Address type	Address	RSSI (dBm)	Length	Advertisement (hex)
bt1	adv-noconn-ind	Jan/02/1970 01:27:28	public	00:0B:57:03:3A:0F	-69	28	1bff01000b57033a0ff78fd1db99bea16...
bt1	adv-noconn-ind	Jan/02/1970 01:27:33	public	00:0B:57:03:3A:0F	-67	28	1bff01000b57033a0fa5e1f23b9fed5a8...
bt1	adv-noconn-ind	Jan/02/1970 01:27:35	public	00:0B:57:03:3A:0F	-71	30	0201061aff4c001502e2c56db5dff48d...
bt1	adv-noconn-ind	Jan/02/1970 01:27:38	public	00:0B:57:03:3A:0F	-70	28	1bff01000b57033a0fe758e254874ec2...
bt1	adv-noconn-ind	Jan/02/1970 01:27:40	public	00:0B:57:03:3A:0F	-70	30	0201061aff4c001502e2c56db5dff48d...
bt1	adv-noconn-ind	Jan/02/1970 01:27:43	public	00:0B:57:03:3A:0F	-68	28	1bff01000b57033a0f459d6ff8b4f4be43...
bt1	adv-noconn-ind	Jan/02/1970 01:27:48	public	00:0B:57:03:3A:0F	-71	28	1bff01000b57033a0f3e9dfed13ac3b1b...
bt1	adv-noconn-ind	Jan/02/1970 01:27:30	public	00:0B:57:03:40:7D	-75	30	0201061aff4c001502e2c56db5dff48d...
bt1	adv-noconn-ind	Jan/02/1970 01:27:32	public	00:0B:57:03:40:7D	-72	28	1bff01000b5703407dc1421552bcebe2...
bt1	adv-noconn-ind	Jan/02/1970 01:27:35	public	00:0B:57:03:40:7D	-75	30	0201061aff4c001502e2c56db5dff48d...
bt1	adv-noconn-ind	Jan/02/1970 01:27:40	public	00:0B:57:03:40:7D	-65	30	0201061aff4c001502e2c56db5dff48d...
bt1	adv-noconn-ind	Jan/02/1970 01:27:42	public	00:0B:57:03:40:7D	-65	28	1bff01000b5703407dc429d82fd3dccc2...
bt1	adv-noconn-ind	Jan/02/1970 01:27:45	public	00:0B:57:03:40:7D	-72	30	0201061aff4c001502e2c56db5dff48d...

In this menu, you can set up a filter by pressing the “Filter” icon. For example, knowing the MAC address of the device, you can set up a filter to only show specific reports.



The screenshot shows the Bluetooth Advertising reports interface with a filter applied. The search area has 'Clear' and 'Find' buttons. The filter rows show 'Address' dropdowns with 'in' and 'Filter' buttons. The first filter row has the address '00:0B:57' entered. The main table displays the following columns: Device, PDU type, Time, Address type, Address, RSSI (dBm), Length, and Advertisement (hex). The table contains 9 rows of data, all for device 'bt1' with PDU type 'adv-noconn-ind'. The time range is from 01:34:05 to 01:34:20. The address type is 'public' and the address is '00:0B:57:03:3A:0F'. The RSSI values range from -66 to -78 dBm, and the advertisement length is 28 or 30 bytes. The advertisement hex data is truncated. At the bottom, it indicates '9 items out of 1024'.

Device	PDU type	Time	Address type	Address	RSSI (dBm)	Length	Advertisement (hex)
bt1	adv-noconn-ind	Jan/02/1970 01:34:05	public	00:0B:57:03:3A:0F	-75	30	0201061aff4c001502e2c56db5dff48d...
bt1	adv-noconn-ind	Jan/02/1970 01:34:07	public	00:0B:57:03:3A:0F	-78	28	1bff01000b57033a0f87e6ee059e9590...
bt1	adv-noconn-ind	Jan/02/1970 01:34:10	public	00:0B:57:03:3A:0F	-68	30	0201061aff4c001502e2c56db5dff48d...
bt1	adv-noconn-ind	Jan/02/1970 01:34:12	public	00:0B:57:03:3A:0F	-66	28	1bff01000b57033a0fab82be8f9840bc8...
bt1	adv-noconn-ind	Jan/02/1970 01:34:15	public	00:0B:57:03:3A:0F	-70	30	0201061aff4c001502e2c56db5dff48d...
bt1	adv-noconn-ind	Jan/02/1970 01:34:01	public	00:0B:57:03:40:7D	-65	28	1bff01000b5703407d798b9e0fae705d...
bt1	adv-noconn-ind	Jan/02/1970 01:34:10	public	00:0B:57:03:40:7D	-67	30	0201061aff4c001502e2c56db5dff48d...
bt1	adv-noconn-ind	Jan/02/1970 01:34:16	public	00:0B:57:03:40:7D	-66	28	1bff01000b5703407dcad139d0325da6...
bt1	adv-noconn-ind	Jan/02/1970 01:34:20	public	00:0B:57:03:40:7D	-68	30	0201061aff4c001502e2c56db5dff48d...

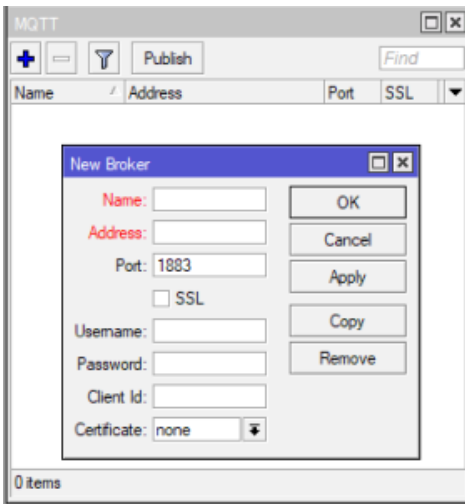
You can add more filter options using “+” icon.

You can remove filter options using “-” icon.

## MQTT Broker configuration

Navigate to IoT>MQTT.

You can add a new broker via “+” button.



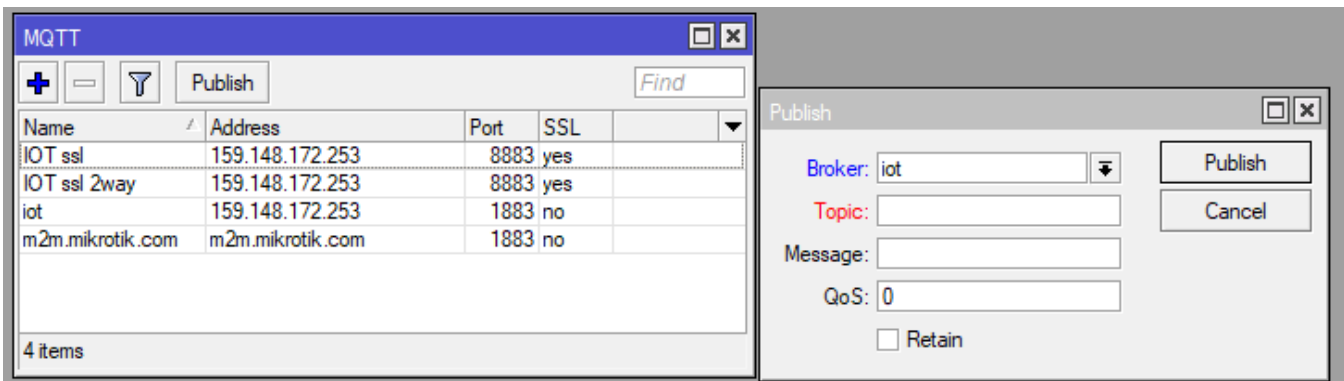
Properties	Description
Name	Identification. Brokers name.
Address	IP address or FQDN name of the MQTT broker without ssl:// or tcp:// prefix.
Port	Network port of the broker. Usually, 1883 or 8883 (for SSL).
SSL	Enable/Disable Secure Socket Layer. If the server uses a self-signed certificate or certificate signed by a non-trusted CA, you have to upload the server's certificates <cr> file to RouterOS. Upload .cer file to the "Files" menu and import the file to certificates in the System>Certificates tab.
Username	Username for MQTT broker.
Password	Password for MQTT broker.
Client Id	A unique ID used for the connection. The broker uses this ID to identify the client.
Certificate	Chose a certificate if required for the two-way authentication.

**note:** You do not have to specify servers certificate (.cer file) in the MQTT broker settings. The "Certificate" field is used for the client's certificate.

**note:** "Name", "Address", and "Port" field configuration is required. Other parameters can be optional or required - depends on how the server/broker is set up.

## Publish

After you created a broker, click the "Publish" button. This box allows you to choose a broker and specify message information.



Select an already configured broker in the "Broker" field (scroll-down menu).

You can then specify the "Topic" (a string used by a broker to filter messages), "Message" (the message itself), "QoS" (indicates Quality of Service level for the message), and "Retain" (whether to retain the message or discard it) parameters.

**note:** "Broker" and "Topic" field configuration is required. "Message", "QoS", and "Retain" can be optional or required - depends on how the server/broker is set up.

## MQTT with script scenario

MQTT broker can be configured with [scripts](#).

Create a new script, use the template as a reference, change the parameters accordingly and run the script.

Every line that begins with a symbol "#" is instructional and it describes the parameter that is going to be configured below the line. Change the parameters within quotation marks "" that would apply to your specific case.

Script example:

```
# Required packages: iot

##### Configuration #####
# Name of an existing MQTT broker that should be used for publishing
:local broker "Demo Device"

# MQTT topic where the message should be published
:local topic "v1/devices/me/telemetry"

# Interface whose MAC should be used as 'Locator ID'
:local locatorIface "ether1"

# POSIX regex for filtering advertisement Bluetooth addresses. E.g. "ABC:33:AC"
# would only include addresses which start with those 3 octets.
# To disable this filter, set it to ""
:local addressRegex ""

# POSIX regex for filtering Bluetooth advertisements based on their data. Same
# usage as with 'addressRegex'.
:local advertisingDataRegex ""

# Signal strength filter. E.g. -40 would only include Bluetooth advertisements
# whose signal strength is stronger than -40dBm.
# To disable this filter, set it to ""
:local rssiThreshold ""

##### System #####
:put ("[*] Gathering system info...")
:local ifaceMac [/interface get [/interface find name=$locatorIface] mac-address]
:local cpuLoad [/system resource get cpu-load]
:local freeMemory [/system resource get free-memory]
:local usedMemory ([/system resource get total-memory] - $freeMemory)
:local rosVersion [/system package get value-name=version \
[/system package find where name ~ "^routeros"]]
:local model [/system routerboard get value-name=model]
:local serialNumber [/system routerboard get value-name=serial-number]
# Health is a bit iffy since 'system health' does not have 'find' in ROS6
:local health [/system health print as-value]
:local supplyVoltage 0
:local boardTemp 0
:foreach entry in=$health do={
  :if ($entry->"name" = "voltage") do={set $supplyVoltage ($entry->"value")}
  :if ($entry->"name" = "board-temperature1") do={set $boardTemp ($entry->"value")}
}
```



```

##### Bluetooth #####
:put ("[*] Gathering Bluetooth info..")
:global btOldestAdvertisementTimestamp
:if ([:typeof $btOldestAdvertisementTimestamp] = "nothing") do={
  # First time this script has been run since booting, need to initialize
  # persistent variables
  :set $btOldestAdvertisementTimestamp 0
}
:local btProcessingStart [/system clock get time]
:local advertisements [/iot bluetooth scanners advertisements print detail \
  as-value where \
  epoch > $btOldestAdvertisementTimestamp and \
  address ~ $addressRegex and \
  data ~ $advertisingDataRegex and \
  rssi > $rssiThreshold
]
:local advJson ""
:local advCount 0
:local advSeparator ""
:local lastAdvTimestamp 0
# Remove semicolons from MAC/Bluetooth addresses
:local minimizeMac do={
  :local minimized
  :local lastIdx ([:len $address] - 1)
  :for idx from=0 to=$lastIdx step=1 do={
    :local char [:pick $address $idx]
    :if ($char != ".:") do={
      :set $minimized "$minimized$char"
    }
  }
  :return $minimized
}
:foreach adv in=$advertisements do={
  :local address ($adv->"address")
  :local ts ($adv->"epoch")
  :local rssi ($adv->"rssi")
  :local ad ($adv->"data")
  :local obj ""
  {
    |"id":1"$[minimizeMac address=$address]|,|
    |"ts":$ts,|
    |"rssi":$rssi,|
    |"ed":{
      |"ad":1"$ad"|
    }|
  }"
  :set $advCount ($advCount + 1)
  :set $lastAdvTimestamp $ts
  # Ensure that the last object is not terminated by a comma
  :set $advJson "$advJson$advSeparator$obj"
  :if ($advSeparator = "") do={
    :set $advSeparator ","
  }
}
:if ($advCount > 0) do={
  :set $btOldestAdvertisementTimestamp $lastAdvTimestamp
}

:put ("[*] Found $advCount new advertisements \
  (processing time: $[[/system clock get time] - $btProcessingStart])")

```

```
##### MQTT #####
:local message \
  "{"
  "clientId": "$[iot mqtt brokers get value-name=client-id \
    [iot mqtt brokers find name=$broker]]",
  "t": 0,
  "v": 1,
  "OldestAdvertisementTimestamp": "$tOldestAdvertisementTimestamp",
  "locs": {
    "id": "$[minimizeMac address=$ifaceMac]",
    "tags": [$advJson],
    "ed": {
      "model": "$model",
      "sn": "$serialNumber",
      "ros": "$rosVersion",
      "cpu": $cpuLoad,
      "umem": $usedMemory,
      "fmem": $freeMemory,
      "psu": $supplyVoltage,
      "temp": $boardTemp
    }
  }
}
}
}
}
:log info "$message";
:put ("[" Total message size: $[:len $message] bytes")
:put ("[" Sending message to MQTT broker...")
/iot mqtt publish broker=$broker topic=$topic message=$message
:put ("[" Done")
```

To run this script, the Broker should be pre-configured:

For example, [thingsboard](https://thingsboard.io) only requires settings that are shown in the screenshot above. When you successfully configure the broker, the only thing that needs to be changed in the script is:

```
:local broker "Demo Device"
```

line, where you should specify the broker's name within the quotation marks "".

Another line that should be taken into account is:

```
:local topic "v1/devices/me/telemetry"
```

, where you should specify the topic.

The rest of the script configuration depends on the overall requirements. The script explains which exact parameters are configured to be published.

Navigate to System>Scripts and add a new script there (name it, for example, script1).

To run the script, you can use the command line:

```
/system script run script1
```

## HTTP fetch with script scenario

Another way to publish data is to use HTTP (instead of MQTT). This can be achieved using [fetch tool](#).

The same principles apply:

Create a new script, use the template as a reference, change the parameters accordingly and run the script.

Every line that begins with a symbol `"#"` is instructional and it describes the parameter that is going to be configured below the line. Change the parameters within quotation marks `""` that would apply to your specific case.

Script example:

```
# Required packages: iot

##### Configuration #####
# Interface whose MAC should be used as 'Locator ID'
:local locatorIface "ether1"

# POSIX regex for filtering advertisement Bluetooth addresses. E.g. "ABC:33:AC"
# would only include addresses which start with those 3 octets.
# To disable this filter, set it to ""
:local addressRegex ""

# POSIX regex for filtering Bluetooth advertisements based on their data. Same
# usage as with 'addressRegex'.
:local advertisingDataRegex ""

# Signal strength filter. E.g. -40 would only include Bluetooth advertisements
# whose signal strength is stronger than -40dBm.
# To disable this filter, set it to ""
:local rssiThreshold ""

##### System #####
:put ("[*] Gathering system info...")
:local ifaceMac [/interface get [/interface find name=$locatorIface] mac-address]
:local cpuLoad [/system resource get cpu-load]
:local freeMemory [/system resource get free-memory]
:local usedMemory ([/system resource get total-memory] - $freeMemory)
:local rosVersion [/system package get value-name=version \
[/system package find where name ~ "routers"]]
:local model [/system routerboard get value-name=model]
:local serialNumber [/system routerboard get value-name=serial-number]
# Health is a bit iffy since 'system health' does not have 'find' in ROS6
:local health [/system health print as-value]
:local supplyVoltage 0
:local boardTemp 0
:foreach entry in=$health do={
  :if ($entry->"name" = "voltage") do={set $supplyVoltage ($entry->"value")}
  :if ($entry->"name" = "board-temperature 1") do={set $boardTemp ($entry->"value")}
}
```

```

##### Bluetooth #####
:put ("[*] Gathering Bluetooth info...")
:global btOldestAdvertisementTimestamp
:if ([:typeof $btOldestAdvertisementTimestamp] = "nothing") do={
  # First time this script has been run since booting, need to initialize
  # persistent variables
  :set $btOldestAdvertisementTimestamp 0
}
:local btProcessingStart [/system clock get time]
:local advertisements [/iot bluetooth scanners advertisements print detail \
  as-value where \
  epoch > $btOldestAdvertisementTimestamp and \
  address ~ $addressRegex and \
  data ~ $advertisingDataRegex and \
  rssi > $rssiThreshold
]
:local advJson ""
:local advCount 0
:local advSeparator ""
:local lastAdvTimestamp 0
# Remove semicolons from MAC/Bluetooth addresses
:local minimizeMac do={
  :local minimized
  :local lastIdx ([:len $address] - 1)
  :for idx from=0 to=$lastIdx step=1 do={
    :local char [:pick $address $idx]
    :if ($char != ".:") do={
      :set $minimized "$minimized$char"
    }
  }
  :return $minimized
}
:foreach adv in=$advertisements do={
  :local address ($adv->"address")
  :local ts ($adv->"epoch")
  :local rssi ($adv->"rssi")
  :local ad ($adv->"data")
  :local obj ""
  {
    |"id":1"$[minimizeMac address=$address]|,|
    |"ts":$ts,|
    |"rssi":$rssi,|
    |"ed":{
      |"ad":1"$ad"|
    }|
  }"
  :set $advCount ($advCount + 1)
  :set $lastAdvTimestamp $ts
  # Ensure that the last object is not terminated by a comma
  :set $advJson "$advJson$advSeparator$obj"
  :if ($advSeparator = "") do={
    :set $advSeparator ","
  }
}
:if ($advCount > 0) do={
  :set $btOldestAdvertisementTimestamp $lastAdvTimestamp
}

:put ("[*] Found $advCount new advertisements \
  (processing time: $[[/system clock get time] - $btProcessingStart])")

```

```
##### MQTT #####
:local message \
  "{
    "t":0,
    "v":1,
    "OldestAdvertisementTimestamp":$btOldestAdvertisementTimestamp,
    "locs":{
      "id":"[$$minimizeMac address=$ifaceMac]",
      "tags":[$advJson],
      "ed":{
        "model":"$model",
        "sn":"$serialNumber",
        "ros":"$rosVersion",
        "cpu":"$cpuLoad,
        "umem":"$usedMemory,
        "fmem":"$freeMemory,
        "psu":"$supplyVoltage,
        "temp":"$boardTemp
      }
    }
  }"
:log info "$message";
:put ("[*] Total message size: $[:len $message] bytes")
/tool fetch http-method=post http-header-field="Content-Type:application/json" http-data=$message url="https://demo.thingsboard.io/api/v1/Q99YIBqv59NdzOel6tyP/telemetry"
:put ("[*] Done")
```

Change the URL accordingly (depends on the server configuration).

```
/tool fetch http-method=post http-header-field="Content-Type:application/json" http-data=$message url="https://demo.thingsboard.io/api/v1/Q99YIBqv59NdzOel6tyP/telemetry"
```

Navigate to System>Scripts and add a new script there (name it, for example, script1).

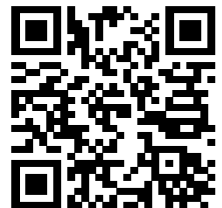
To run the script, you can use the command line:

```
/system script run script1
```

## MikroTik mobile app

Use the MikroTik smartphone app to configure your router in the field, or to apply the most basic initial settings for your MikroTik home access point.

1. Scan QR code and choose your preferred OS.
2. Install and open the application.
3. By default, the IP address and user name will be already entered.
4. Click Connect to establish a connection to your device through a wireless network.
5. Choose Quick setup and the application will guide you through all basic configuration settings in a couple of easy steps.
6. An advanced menu is available to fully configure all necessary settings.



## Federal Communication Commission Interference Statement

Model	FCC ID	Contains FCC ID
RB924i-2nD-BT5&BG77	TV7924BT5BG77	XMR201912BG77

This equipment has been tested and found to comply with the limits for a Class B digital device, pursuant to Part 15 of the FCC Rules. These limits are designed to provide reasonable protection against harmful interference in a residential installation.

This equipment generates, uses, and can radiate radio frequency energy and, if not installed and used in accordance with the instructions, may cause harmful interference to radio communications. However, there is no guarantee that interference will not occur in a particular installation. If this equipment does cause harmful interference to radio or television reception, which can be determined by turning the equipment off and on, the user is encouraged to try to correct the interference by one or more of the following measures:

- Reorient or relocate the receiving antenna.
- Increase the separation between the equipment and receiver.
- Connect the equipment into an outlet on a circuit different from that to which the receiver is connected.
- Consult the dealer or an experienced radio/TV technician for help.

FCC Caution: Any changes or modifications not expressly approved by the party responsible for compliance could void the user's authority to operate this equipment.

This device complies with Part 15 of the FCC Rules. Operation is subject to the following two conditions: (1) This device may not cause harmful interference, and (2) this device must accept any interference received, including interference that may cause undesired operation.

Note: This unit was tested with shielded cables on the peripheral devices. Shielded cables must be used with the unit to ensure compliance.

## Innovation, Science and Economic Development Canada

Model	IC	Contains IC
RB924i-2nD-BT5&BG77	7442A-924BT5BG77	10224A-201912BG77

This device contains license-exempt transmitter(s)/receiver(s) that comply with Innovation, Science, and Economic Development Canada's license-exempt RSS(s). Operation is subject to the following two conditions: (1) This device may not cause interference. (2) This device must accept any interference, including interference that may cause undesired operation of the device.

L'émetteur/récepteur exempt de licence contenu dans le présent appareil est conforme aux CNR d'Innovation, Sciences et Développement économique Canada applicables aux appareils radio exempts de licence. L'exploitation est autorisée aux deux conditions suivantes: 1) L'appareil ne doit pas produire de brouillage; 2) L'appareil doit accepter tout brouillage radioélectrique subi, même si le brouillage est susceptible d'en compromettre le fonctionnement.

This Class B digital apparatus complies with Canadian ICES-003.

Cet appareil numérique de la classe [B] est conforme à la norme NMB-003 du Canada.

CAN ICES-003 (B) / NMB-003 (B)

## CE Declaration of Conformity

BG	С настоящото Mikrotikls SIA декларира, че този тип радиосъоръжение RB924i-2nD-BT5&BG77 е в съответствие с Директива 2014/53/ЕС. Цялостният текст на ЕС декларацията за съответствие може да се намери на следния интернет адрес: <a href="https://mikrotik.com/products">https://mikrotik.com/products</a>
CS	Tímto Mikrotikls SIA prohlašuje, že typ rádiového zařízení RB924i-2nD-BT5&BG77 je v souladu se směrnicí 2014/53/EU. Úplné znění EU prohlášení o shodě je k dispozici na této internetové adrese: <a href="https://mikrotik.com/products">https://mikrotik.com/products</a>
DA	Hermed erklærer Mikrotikls SIA, at radioudstyrstypen RB924i-2nD-BT5&BG77 er i overensstemmelse med direktiv 2014/53/EU. EU-overensstemmelseserklæringens fulde tekst kan findes på følgende internetadresse: <a href="https://mikrotik.com/products">https://mikrotik.com/products</a>
DE	Hiermit erklärt Mikrotikls SIA, dass der Funkanlagentyp RB924i-2nD-BT5&BG77 der Richtlinie 2014/53/EU entspricht. Der vollständige Text der EU-Konformitätserklärung ist unter der folgenden Internetadresse verfügbar: <a href="https://mikrotik.com/products">https://mikrotik.com/products</a>
EL	Με την παρούσα ο/η Mikrotikls SIA, δηλώνει ότι ο ραδιοεξοπλισμός RB924i-2nD-BT5&BG77 πληροί την οδηγία 2014/53/ΕΕ. Το πλήρες κείμενο της δήλωσης συμμόρφωσης ΕΕ διατίθεται στην ακόλουθη ιστοσελίδα στο διαδίκτυο: <a href="https://mikrotik.com/products">https://mikrotik.com/products</a>
EN	Hereby, Mikrotikls SIA declares that the radio equipment type RB924i-2nD-BT5&BG77 is in compliance with Directive 2014/53/EU. The full text of the EU declaration of conformity is available at the following internet address: <a href="https://mikrotik.com/products">https://mikrotik.com/products</a>

ES	Por la presente, Mikrotikls SIA declara que el tipo de equipo radioeléctrico RB924i-2nD-BT5&BG77 es conforme con la Directiva 2014/53/UE. El texto completo de la declaración UE de conformidad está disponible en la dirección Internet siguiente: <a href="https://mikrotik.com/products">https://mikrotik.com/products</a>
ET	Käesolevaga deklareerib Mikrotikls SIA, et käesolev raadioseadme tüüp RB924i-2nD-BT5&BG77 vastab direktiivi 2014/53/EL nõuetele. ELi vastavusdeklaratsiooni täielik tekst on kättesaadav järgmisel internetiaadressil: <a href="https://mikrotik.com/products">https://mikrotik.com/products</a>
FI	Mikrotikls SIA vakuuttaa, että radiolaitetyyppi RB924i-2nD-BT5&BG77 on direktiivin 2014/53/EU mukainen. EU-vaatimustenmukaisuusvakuutuksen täysimittainen teksti on saatavilla seuraavassa internetosoitteessa: <a href="https://mikrotik.com/products">https://mikrotik.com/products</a>
FR	Le soussigné, Mikrotikls SIA, déclare que l'équipement radioélectrique du type RB924i-2nD-BT5&BG77 est conforme à la directive 2014/53/UE. Le texte complet de la déclaration UE de conformité est disponible à l'adresse internet suivante: <a href="https://mikrotik.com/products">https://mikrotik.com/products</a>
HR	Mikrotikls SIA ovime izjavljuje da je radijska oprema tipa RB924i-2nD-BT5&BG77 u skladu s Direktivom 2014/53/EU. Cjeloviti tekst EU izjave o sukladnosti dostupan je na sljedećoj internetskoj adresi: <a href="https://mikrotik.com/products">https://mikrotik.com/products</a>
HU	Mikrotikls SIA igazolja, hogy a RB924i-2nD-BT5&BG77 típusú rádióberendezés megfelel a 2014/53/EU irányelvnek. Az EU-megfelelőségi nyilatkozat teljes szövege elérhető a következő internetes címen: <a href="https://mikrotik.com/products">https://mikrotik.com/products</a>
IT	Il fabbricante, Mikrotikls SIA, dichiara che il tipo di apparecchiatura radio RB924i-2nD-BT5&BG77 è conforme alla direttiva 2014/53/UE. Il testo completo della dichiarazione di conformità UE è disponibile al seguente indirizzo Internet: <a href="https://mikrotik.com/products">https://mikrotik.com/products</a>
IS	Hér með lýsir Mikrotikls SIA því yfir að RB924i-2nD-BT5&BG77 er í samræmi við grunnkröfur og aðrar kröfur, sem gerðar eru í tilskipun 2014/53/EU. Fullur texti ESB samræmisýfirlýsingar er að finna á eftirfarandi veffangi: <a href="https://mikrotik.com/products">https://mikrotik.com/products</a>
LT	Aš, Mikrotikls SIA, patvirtinu, kad radijo įrenginių tipas RB924i-2nD-BT5&BG77 atitinka Direktyvą 2014/53/ES. Visas ES atitikties deklaracijos tekstas prieinamas šiuo interneto adresu: <a href="https://mikrotik.com/products">https://mikrotik.com/products</a>
LV	Ar šo Mikrotikls SIA deklarē, ka radioiekārta RB924i-2nD-BT5&BG77 atbilst Direktīvai 2014/53/ES. Pilns ES atbilstības deklarācijas teksts ir pieejams šādā interneta vietnē: <a href="https://mikrotik.com/products">https://mikrotik.com/products</a>
MT	B'dan, Mikrotikls SIA, niddikjara li dan it-tip ta' tagħmir tar-radju RB924i-2nD-BT5&BG77 huwa konformi mad-Direttiva 2014/53/UE. It-test kollu tad-dikjarazzjoni ta' konformità tal-UE huwa disponibbli f'dan l-indirizz tal-Internet li ġej: <a href="https://mikrotik.com/products">https://mikrotik.com/products</a>
NL	Hierbij verklaar ik, Mikrotikls SIA, dat het type radioapparatuur RB924i-2nD-BT5&BG77 conform is met Richtlijn 2014/53/EU. De volledige tekst van de EU-conformiteitsverklaring kan worden geraadpleegd op het volgende internetadres: <a href="https://mikrotik.com/products">https://mikrotik.com/products</a>
NO	Mikrotikls SIA erklærer herved at utstyret RB924i-2nD-BT5&BG77 er i samsvar med de grunnleggende krav og øvrige relevante krav i direktiv 2014/53/EU. Den fulle teksten til EU-samsvarserklæringen er tilgjengelig på følgende internetadresse: <a href="https://mikrotik.com/products">https://mikrotik.com/products</a>
PL	Mikrotikls SIA niniejszym oświadcza, że typ urządzenia radiowego RB924i-2nD-BT5&BG77 jest zgodny z dyrektywą 2014/53/UE. Pełny tekst deklaracji zgodności UE jest dostępny pod następującym adresem internetowym: <a href="https://mikrotik.com/products">https://mikrotik.com/products</a>
PT	O(a) abaixo assinado(a) Mikrotikls SIA declara que o presente tipo de equipamento de rádio RB924i-2nD-BT5&BG77 está em conformidade com a Diretiva 2014/53/UE. O texto integral da declaração de conformidade está disponível no seguinte endereço de Internet: <a href="https://mikrotik.com/products">https://mikrotik.com/products</a>
RO	Prin prezenta, Mikrotikls SIA declară că tipul de echipamente radio RB924i-2nD-BT5&BG77 este în conformitate cu Directiva 2014/53/UE. Textul integral al declarației UE de conformitate este disponibil la următoarea adresă internet: <a href="https://mikrotik.com/products">https://mikrotik.com/products</a>
SK	Mikrotikls SIA týmto vyhlasuje, že rádiové zariadenie typu RB924i-2nD-BT5&BG77 je v súlade so smernicou 2014/53/EÚ. Úplné EÚ vyhlásenie o zhode je k dispozícii na tejto internetovej adrese: <a href="https://mikrotik.com/products">https://mikrotik.com/products</a>
SL	Mikrotikls SIA potrjuje, da je tip radijske opreme RB924i-2nD-BT5&BG77 skladen z Direktivo 2014/53/EU. Celotno besedilo izjave EU o skladnosti je na voljo na naslednjem spletnem naslovu: <a href="https://mikrotik.com/products">https://mikrotik.com/products</a>
SV	Härmed försäkrar Mikrotikls SIA att denna typ av radioutrustning RB924i-2nD-BT5&BG77 överensstämmer med direktiv 2014/53/EU. Den fullständiga texten till EU-försäkran om överensstämmelse finns på följande webbadress: <a href="https://mikrotik.com/products">https://mikrotik.com/products</a>

## WLAN / Bluetooth / LTE

(EN) Operating Frequency / Maximum output power	WLAN	2400-2483.5 MHz / 20 dBm
	Bluetooth	2400-2483.5 MHz / 20 dBm
(DE) Betriebsfrequenz / maximale Ausgangsleistung	LTE FDD Band 1	2100 MHz / 21 dBm
	LTE FDD Band 3	1800 MHz / 21 dBm
(FR) Fréquence de fonctionnement / puissance de sortie maximale	LTE FDD Band 3	1800 MHz / 21 dBm
	LTE FDD Band 8	900 MHz / 21 dBm
(IT) Frequenza operativa / massima potenza di uscita	LTE FDD Band 8	900 MHz / 21 dBm

(ES) Frecuencia de funcionamiento / potencia de salida máxima	LTE FDD Band 20	800 MHz / 21 dBm
(RU) Рабочая частота / максимальная выходная мощность	LTE FDD Band 28	700 MHz / 21 dBm



(EN) This MikroTik device meets Maximum WLAN and LTE transmit power limits per ETSI regulations. For more detailed information see Declaration of Conformity above / (DE) Dieses MikroTik-Gerät erfüllt die maximalen WLAN- und LTE-Sendeleistung Grenzwerte gemäß ETSI-Bestimmungen. Weitere Informationen finden Sie oben unter Konformitätserklärung / (FR) Cet appareil MikroTik respecte les limites maximales de puissance de transmission WLAN et LTE conformément aux réglementations ETSI. Pour plus d'informations, voir la déclaration de conformité ci-dessus / (IT) Questo dispositivo MikroTik è conforme ai limiti massimi di potenza di trasmissione WLAN e LTE in conformità con le normative ETSI. Per ulteriori informazioni, consultare la dichiarazione di conformità sopra / (ES) Este dispositivo MikroTik cumple con los límites máximos de potencia de transmisión WLAN y LTE de acuerdo con las regulaciones ETSI. Para obtener más información, consulte la declaración de conformidad anterior / (RU) Это устройство MikroTik соответствует максимальным пределам мощности передачи WLAN и LTE в соответствии с правилами ETSI. Для получения дополнительной информации см. Декларацию соответствия выше.

***(EN) Technical Specifications / (DE) Technische Spezifikationen / (FR) Spécifications techniques /***

***(IT) Specifiche tecniche / (ES) Especificaciones técnicas / (RU) Технические характеристики:***

Product Power Input Options	Power Adapter Output Specification		Degrees of protection provided by enclosure (IP Code)	Operating Temperature
	Voltage	Current		
DC Jack PoE In Ethernet Port MicroUSB 5V Port	24 V	1.2 A	IP20	±0°..+40°C